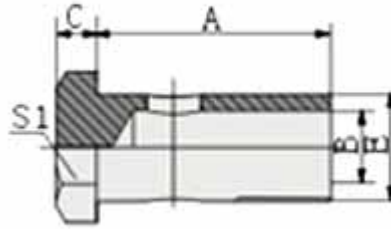


Banjo bolts



700M-Metric Bolt DIN 7643

Material: low or medial Carbon steel.

Surface treatment: trivalent or hexavalent chromium passivating Zinc (CR3+ or CR6+).

Inner packing: Plastic bag.

Outer packing: Standard exporting carton, seaworthy pallet.

Lutong is specialized in supply of hydraulic hose fittings with good quality and favorable price.

Technical Data

Part Number	Screw Tread E	Dimensions			
		A	B	C	S1
700M-10	M10×1	19	5.5	6	14
700M-12	M12×1.5	24	7	6	17
700M-14	M14×1.5	26	9	6	19
700M-16	M16×1.5	28	11	6	22
700M-18	M18×1.5	32	13	6	24
700M-22	M22×1.5	39	16	7	27
700M-26	M26×1.5	45	20	7	32
700M-30	M30×1.5	51	24	7	36